



# Software Flash 15" Samsung TFT



## Description



**T A B**

A U S T R I A

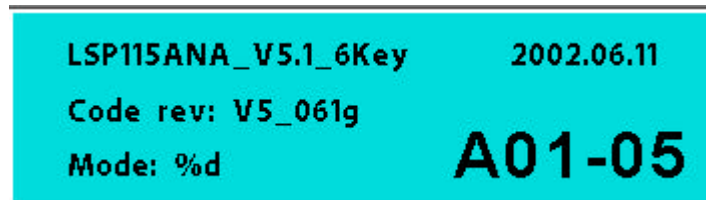
Industrie- und Unterhaltungs-  
elektronik GmbH & CoKG



Display version:

Family 5:

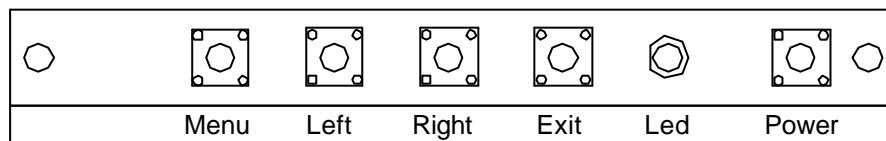
**Fig. 1**



**Procedure for determining the current software version on the display:**

Press the Exit and Left buttons (**Fig. 2**) simultaneously and hold down for around three seconds. The display will then show the current software version that is in the display.

**Fig. 2**



The latest version will have to be loaded into the display if versions are on the display that do **not** correspond to the latest version.

**Attention !!!! The correct flash hardware for the display type must be connected.**

Different hardware versions:

Hardware for Version 4

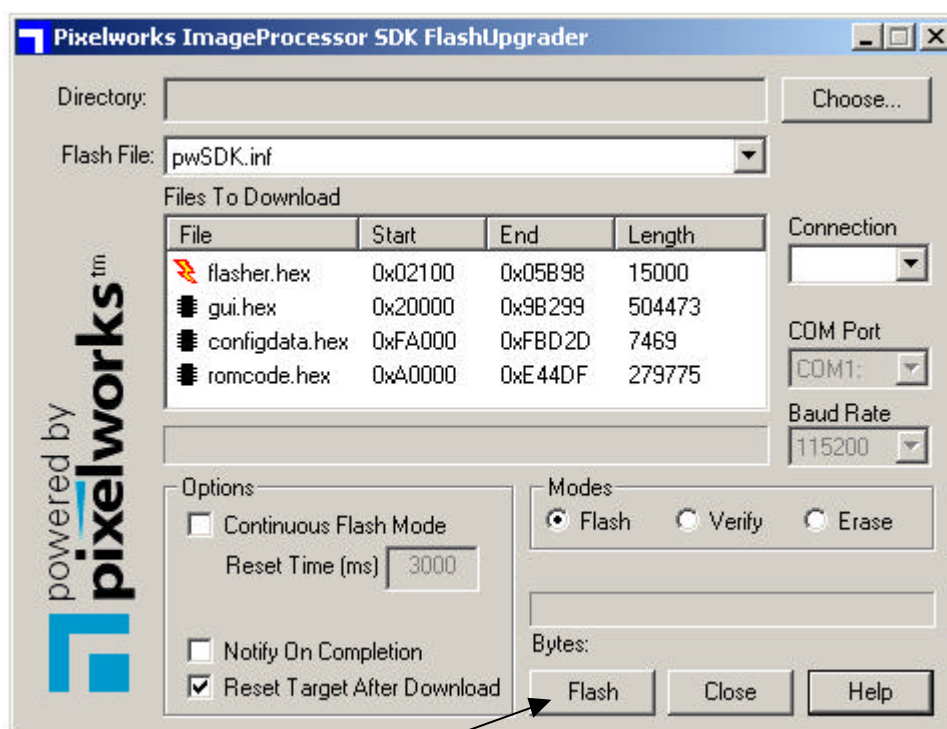
Hardware for Version 5



### Procedure for loading the latest software version (flashing):

- Disconnect the display from the power source
- Connect the signal cable from the interface to the display
- Enter the flash program (Flashupgrader .exe)
- Select Flasher.hex
- Press Flash button. (**Fig. 3**)
- Connect the display to the power source
- Wait until the software has been transferred (image visible again)

**Fig. 3**

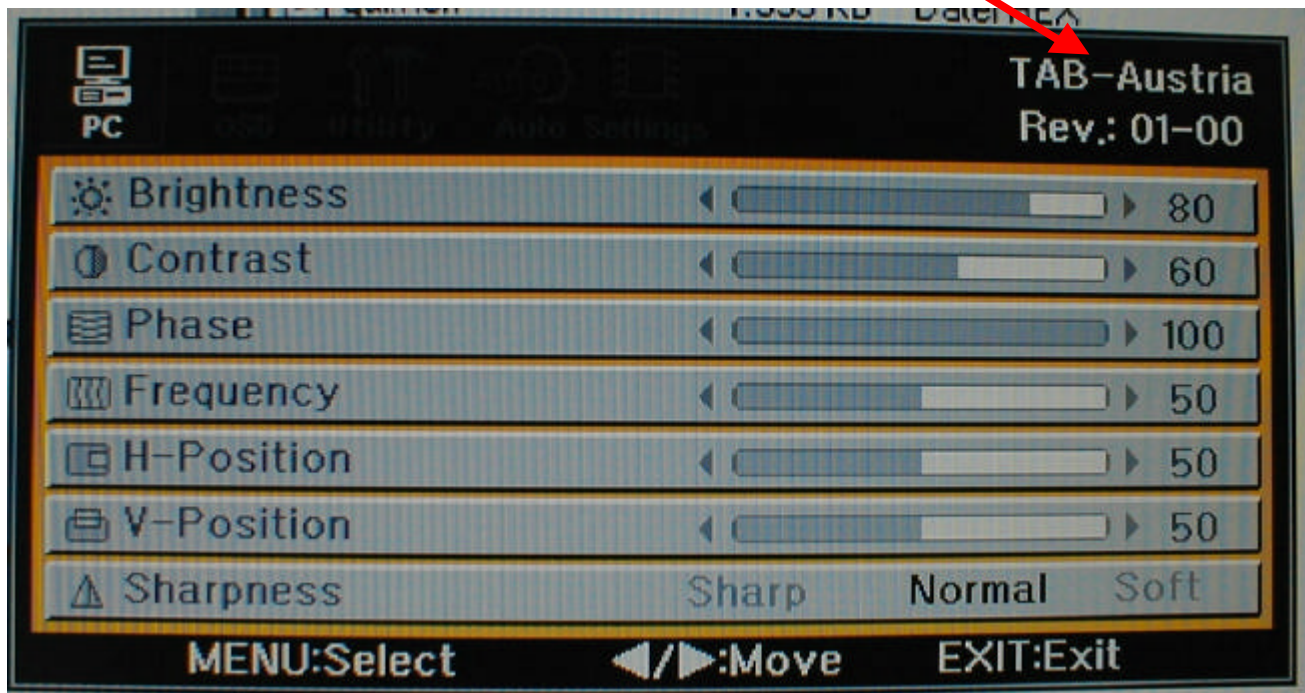


**Flash button**



Latest software version:

**TAB-AUSTRIA  
REV.: 01-00**



**All displays must show this version.**

Document created by:

Stefan Manzenreiter

TAB-Austria 28.07.2003  
DW 260

